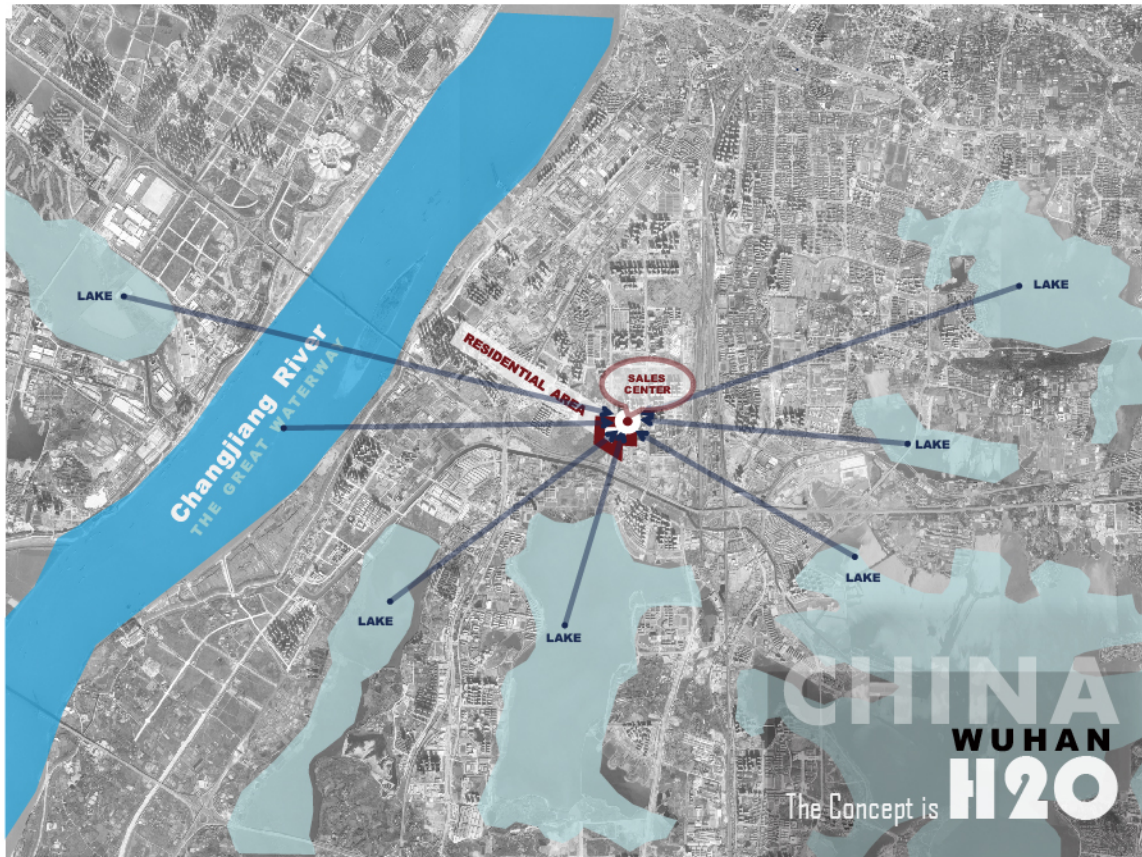




**LIGHT WATERFALL**  
**LICHT WATERSVAL**

# The 1/4 area of Wuhan City of is WATER



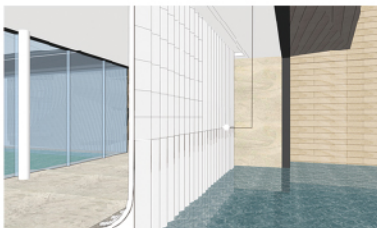
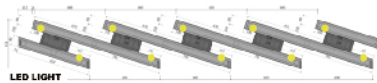
||| This is a show and sales space. We take part in architectural, interior, FF&E as well as landscape design aiming at to integrate the interior, architectural and landscape design together to form a show and experience area like art museum.

# PICTURE Light Waterfall

III The project is currently a sales exhibition area for real estate developers with a service period of 3-4 years. Finally, the building will be handed over to the government as a community art gallery space. Use art to protect buildings for future use, save unnecessary rebuilding and waste, and begin to lay the groundwork for the first three to four years.



**Inspiration**



**Design**





## PICTURE Flexagon Feeling Marble Wall



||| A large pool is designed in front of the architecture and it looks like that the whole building is floating on the water. A 50 meter corridor cuts surface of the pool and connects the entrance of the sales from which the guests can access the interior space slowly. Before accessing the entrance, the guests passes a 16-meter-high entrance of light marble wall. It is so high and its side surface looks like a flexagon from distance.