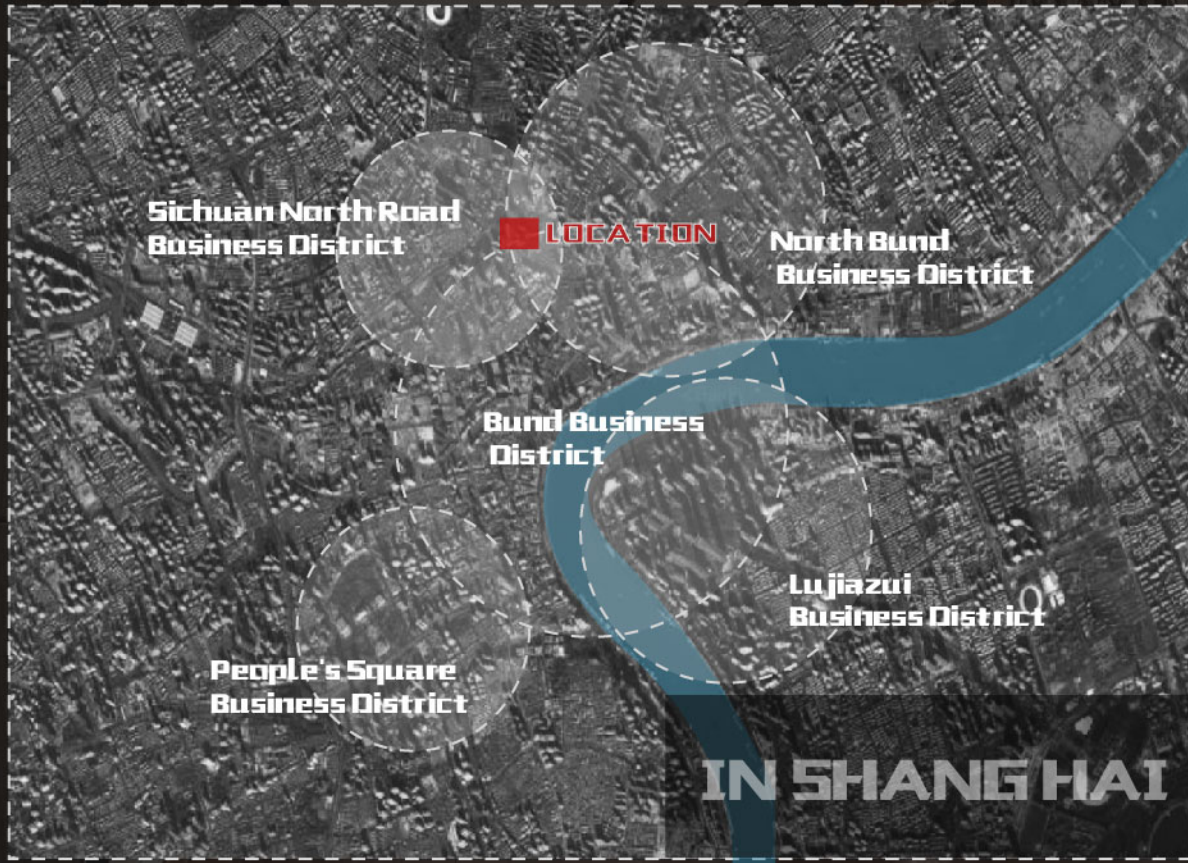




THE PARK

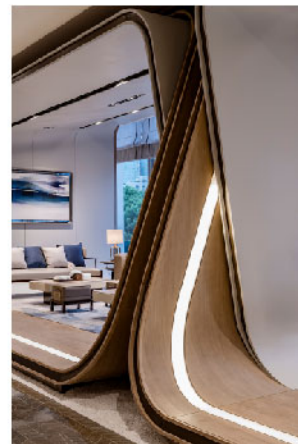
LOCATION



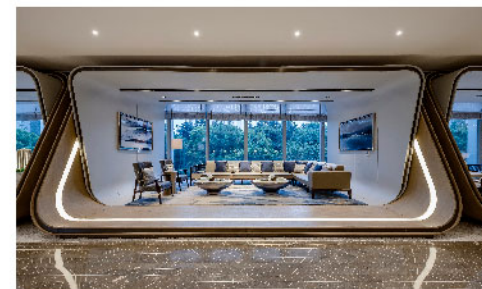
The Pearl River Platinum Bund is located in the triangular area consisting of the three “active areas” of the Bund, Lujiazui and North Bund, enjoying the prospect of regional development. Adjacent to Sichuan North Road Park and Helen Park, and inspired by the landmark park with decades of history, the designer thought of embedding the concept of “Oriental Garden” into the design, meaning that in the centuries of humanity, enjoy the exquisite nature. Habitat quality living environment.



The metal frame is used to cut off the VIP room. The exquisite geometric shape of the metal not only ensures the privacy of the VIP room, but also makes the space transparent. During the daytime, the outdoor sunlight is scattered indoors, and the light and shadow effect makes the space more flexible.



As the saying goes, the water beauty is close, and the waterfront beauty is human. The designer moved the waterscape from the outdoors to the interior, and used the lotus pond waterscape in many places to express the harmonious life and harmony of people and nature. The metal lotus leaf art installation not only runs through the oriental rhythm of modern humanities, but also brings a unique avant-garde fashion sense of metal. The two cultures communicate and collide in the same space, and travel to the unique oriental garden charm.



the floor lights of the negotiation area and the entrance style of the negotiation space make the space show The sense of the future, the metal frame hanging on the wall echoes this sense of the future, forming a futuristic fashion. The use of color and soft decoration combines the two different styles to form the design style of modern New Oriental. From simple furniture to hard materials and even artworks, it exudes the beauty and beauty of the modern Oriental. Longing for a better life.